



# iNSpira-Sorb Acoustic Panels

Our iNSpira-Sorb Panels are a high quality sound absorbing panel system. The panels are designed as a wall lining to control reverberant noise in areas with hard surfaces.

iNSpira-Sorb Acoustic panel systems improve the quality of the workplace environment due to the products ability to absorb echo and reverberation. Designed with a fabric finish which is available in a large range of colours.

## ADVANTAGES

- Outstanding sound absorption performance – Class A and Class C
- Over 100 standard fabric colours available
- High content of recyclable material
- Easy installation method
- Very quick availability

## APPLICATIONS

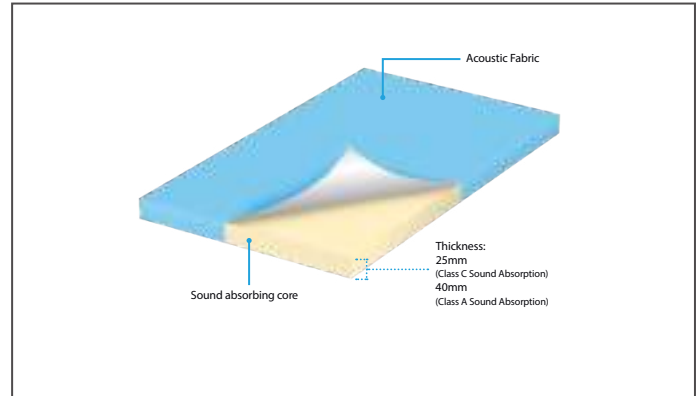
iNSpira-Sorb acoustic wall panels offer a fabric faced panel solution for areas where there is an echo and reverberation problem.

The acoustic wall panels are extensively used in schools, offices, restaurants, studios, sports and community halls and meeting rooms. The list is endless.

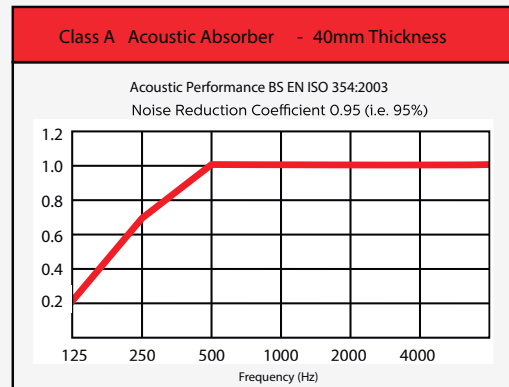
iNSpira-Sorb panels perform on several fronts. As well as solving your acoustic problem, they also come to you pre-decorated to offer a tasteful level of decoration by injecting colour and texture into your desired setting. Ideal for any internal environment where first impressions count and noise management enhances the quality of space. Designed to transform any area into a vehicle for creating the perfect impression.

iNSpira-Sorb acoustic wall panels are available in standard size panels and can be manufactured in customised sizes to meet your requirement. The iNSpira-Sorb acoustic wall panels can change the aesthetics of a room as well as making it acoustically correct. We offer a wide variety of fabric colours which come in both standard and superior fabric finishes. Should this be the chosen option a small sample of fabric would be required to check suitability.

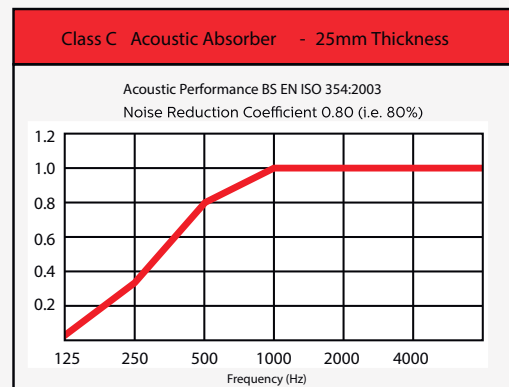
iNSpira-Sorb Acoustic Panels are applied to the wall with impaling clips and contact adhesive.



## ACOUSTIC PERFORMANCE



Direct fixed backing



Direct fixed backing

Higher absorption can be achieved when installed with a cavity



## TECHNICAL GUIDELINES

### CLEANING

Light dirt marks may be removed by using a proprietary carpet spot cleaner. A small area should be tested before doing the rest of the area to ensure that the fabric is not adversely affected.

### WEIGHT

iNSpira-Sorb Acoustic Panels weigh in at 3.5kg/m<sup>2</sup> for the 25mm thickness panels. 40mm thickness panels weigh 4.5kg/m<sup>2</sup>.  
(Note: all weights are given as approximations.)

### FIRE

iNSpira-Sorb core board has been tested and offers Class O fire rating to BS476: Part 6. Fabric facing complies with Class 1 to BS476: Part 7. Class O fabrics can be supplied on request.

## BESPOKE SYSTEM

iNSpira-Sorb Bespoke system allows for a secure installation of iNSpira-Sorb Acoustic Panels without the added aesthetic of visible trims. Instead, each panel is custom manufactured to the size required and the fabric is wrapped around all 4 edges. The panel is simply bonded to the wall by using our impaling clips and contact adhesive.

Our impaling clips & contact adhesive make light work of installations – Whether you are applying panels to concrete, masonry, wood, plaster or metal. Our impaling clips are available in 2 different depths to accommodate both panel thicknesses. The correct clips & quantities will be included with your order, whatever the thickness.

### STANDARD SIZES: (25mm or 40mm thickness)

1200 x 900mm      1200 x 2100mm

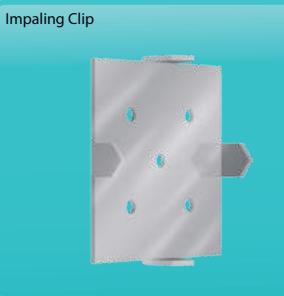
1200 x 1200mm    1200 x 2400mm

1200 x 1800mm    1200 x 2700mm

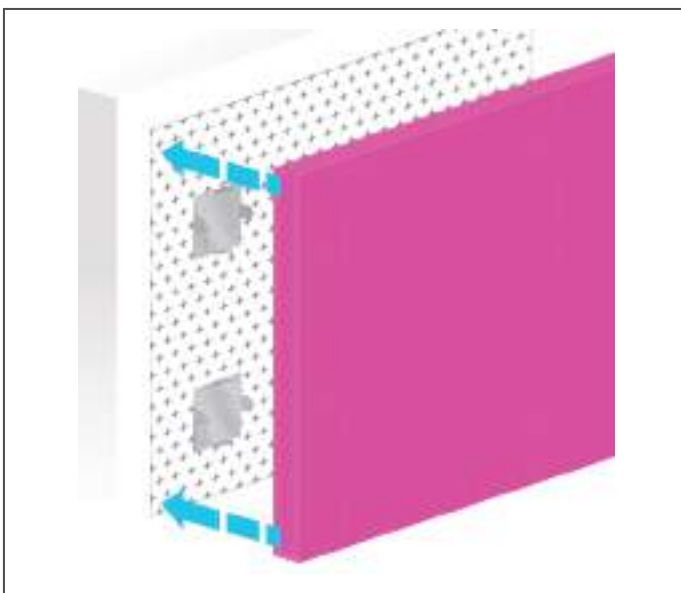
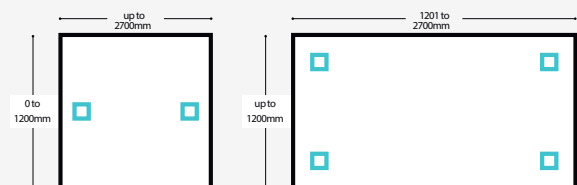
Due to the directional weave in our fabrics, it is essential that the height & width dimension of each panel be stated when ordering.

(Dimensional tolerance of panels: +/- 4mm)

### iNSpira-Sorb BESPOKE SYSTEM COMPONENTS



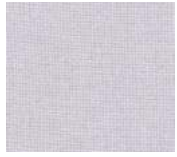
We recommend using the following number of impaling clips for the appropriate panel sizes.



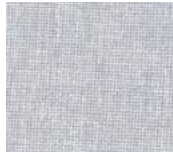
# Fabric Colours

Whatever your décor – Whatever your style – we are sure to have you covered with our extensive range of fabric colours.

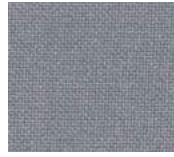
## CARA COLOUR RANGE



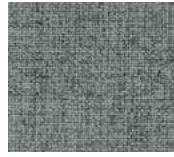
Clan EJ169



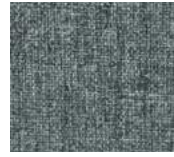
Glass EJ004



Chaucer EJ172



Portland EJ016



Lead EJ104



Hillswick EJ190



Denny EJ196



Merrick EJ048



Spray EJ033



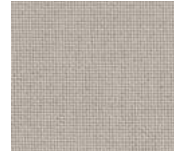
Lomond EJ192



Austen EJ173



Beltane EJ193



Shetland EJ191



Lerwick EJ194



Lossie EJ197



Tummel EJ038



Pitlochry EJ076



Maree EJ195



Fairisle EJ186



Staffa EJ185



Carron EJ015



Lora EJ187



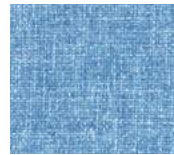
Ronay EJ189



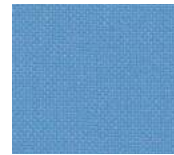
Easdale EJ188



Adriatic EJ154



Dolphin EJ105



Inverness EJ175



Galilee EJ125



Cluanie EJ180



Walten EJ011



Black EJ138


## LUCIA COLOUR RANGE



						
Adobo YB165	Oyster YB107	Sandstorm YB302	Reef YB085	Aruba YB093	Solano YB088	Tortuga YB168
						
Jamaica YB027	Calypso YB106	Lobster YB087	Belize YB105	Turtle YB098	Apple YB096	Madura YB156
						
Campeche YB301	Windjammer YB047	Montserrat YB011	Taboo YB045	Bridgetown YB102	Diablo YB101	Mauve YB069
						
Bluefield YB097	Marianna YB157	Arecibo YB099	Bermuda YB084	Martinique YB004	Steel YB095	Scuba YB089
						
Bluebell YB097	Ocean YB100	Tarot YB090	Costa YB026	Tobago YB030	Rum YB086	Slip YB094
						
Tequilla YB038	Blizzard YB108	Buru YB170	Havana YB009	Sombrero YB046		

## L2 COLOUR RANGE



						
Vertex AL027	Positive AL019	Rotation AL022	Divide AL015	Multiply AL014	Subtract AL013	Value AL006
						
Tangent AL026	Symmetry AL024	Cuboid AL025	Helix AL021	Algebra AL005		

## PRODUCT SPECIFICATION

### 1. Product

Install with the following components:

#### iNSpira-Sorb Bespoke Panel System

Size of panel:	.....mm (h) x .....mm (w)
25mm thick	Class C Absorption
40mm thick	Class A Absorption
Contact Adhesive	500ml Cans
Impaling clips	

### 2. Finish

Fabric colour to be chosen from the Inspired Noise standard range:

L2	Colour..... AL.....
Lucia	Colour..... YB.....
Cara	Colour..... EJ.....

### 3. Delivery, Storage & Handling

Protect iNSpira-Sorb Wall Panels from excessive moisture when storing, and handling.

### 4. Installation

Install acoustic wall panels in locations indicated, top edges level and in alignment with other panels. Comply with manufacturers written instructions for installation of panels using type of fixing accessories indicated.

### 5. Cleaning

- A. After completion of installation of panels, remove dust on panels.
- B. Remove surplus material, rubbish and debris resulting from panel installation, on completion of the work, and leave areas of installation in a neat and clean condition.

