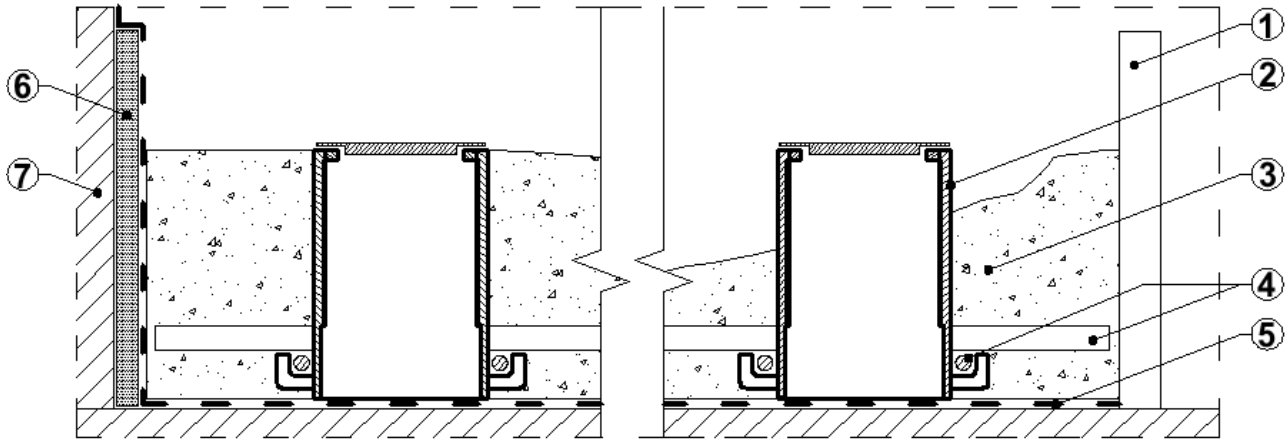


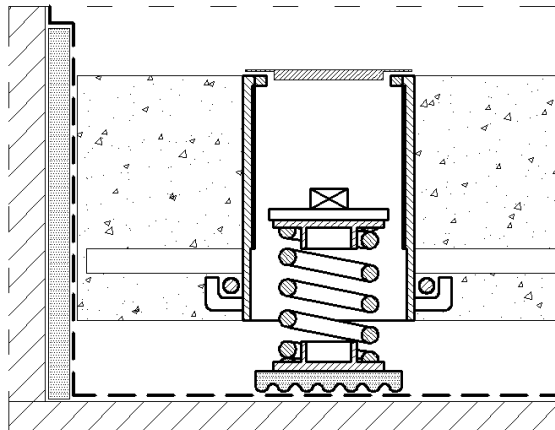
INSTALLATION



1st Step

- Cover floor with polyethylene sheeting.
- Place antivibration board (6.)
- Place housing of **VIBRO - JS**.
- Place reinforcing of the slab (according civil engineers' study).
- Pour concrete.

- Removed plywood forms.
- VIBRO - JS** (housing).
- Concrete.
- Indicative reinforcing of the slab.
- Polyethylene sheeting (---).
- Antivibration board.
- Existing wall.



2nd Step

- Place internal antivibration system of **VIBRO-JS**.
- Load progressively - uniform the springs through special tool for elevation and regulation.
- Place cover plate.