

SLM Series

Construction

Elastomer-metal combination with screwed-on base plate, air chamber made of elastomer reinforced with steel rings, air control with car tyre valve, 10 sizes

Properties

- Low frequency active or passive support
- Vertical and horizontal stiffness approx. 1:1
- Vibration isolation
- Shock absorption
- Structure-borne sound insulation
- Anchor-free installation
- Can function unpressurised
- Load region: 0.2 kN – 100 kN
- Natural frequency (stat.) 3 Hz – 5 Hz
- Natural frequency (stat.) unpressurised 8 Hz

Area of application

Measuring machines, plane tables, foundations, presses, automatic cutting presses, nibbling machines, compressors, fans, air conditioners

Materials

- Elastomer body in CR grade with high elasticity, oil-resistant and non-ageing
- Carrier and base plate: SLM 1 – 12 aluminium, SLM 24 – 192 galvanised steel
- Screw grade 8.8, galvanised

SLM A



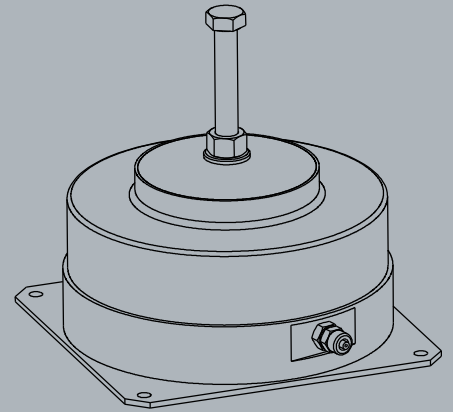
Levelling

Levelling range +/- 5 mm or +/- 6 mm, air-pressure controlled

Accessories

- Automatic levelling control:
- Mechanical-pneumatic version
 - Electro-pneumatic version (Reset time and accuracy programmable)

SLM B



Reduced maintenance due to automatic pressure monitoring

Delivery contents

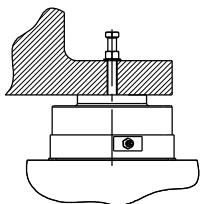
Pneumatic spring element with hexagon head screw

Accessory

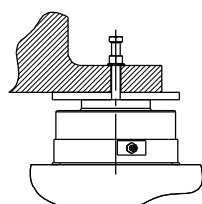
Mounting plate to distribute planar load over full area of element in cases where machine footprint is undersize

Mounting options

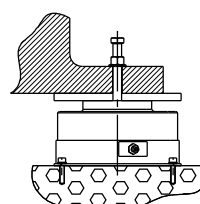
SLM pneumatic spring type



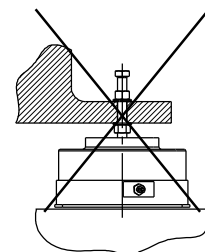
SLM pneumatic spring type with mounting plate for undersize machine foot

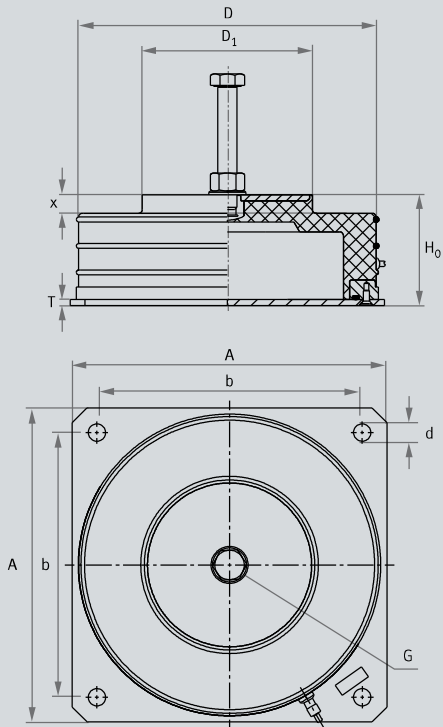


SLM pneumatic spring type with mounting plate, bolted to the floor



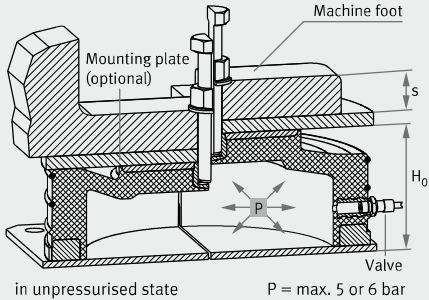
Installation not permissible



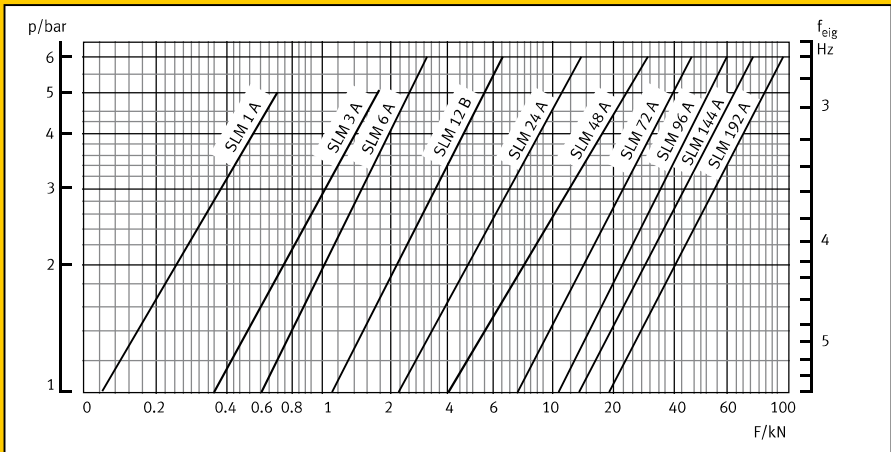


Standard version: hexagon head screw

Leveling by means of air pressure



in unpressurised state P = max. 5 or 6 bar



SLM Series Dimension table Dimensions in mm	D	H ₀	D1	G	L	S Machine base thick- ness (max.)	Ni	X	A	b	d	T	Weight kg	Load (max.) kN
SLM 1 A	73	65	28	M10	80	50	+/- 5	12	75	60	7	3	0.3	0.65
SLM 3 A	105	65	52	M12	90	65	+/- 5	12	105	89	7	3	0.5	1.8
SLM 6 A	127	90	60	M12	90	65	+/- 6	15	130	108	7	3	1.0	2.8
SLM 12 B	172	90	96	M12	90	65	+/- 6	15	175	153	7	3	2.2	6.0
SLM 24 A	245	90	138	M16	100	75	+/- 6	15	255	215	14	5	7.2	13.0
SLM 48 A	338	90	205	M16	100	75	+/- 6	15	343	305	14	5	14.7	26.0
SLM 72 A	380	91	255	M24x1.5	140	75	+/- 6	17	385	310	20	6	22.5	38.0
SLM 96 A	468	90	300	M24	130	75	+/- 6	15	470	406	20	6	29.3	55.0
SLM 144 A	550	91	360	M24x1.5	140	75	+/- 6	17	555	480	20	6	46.5	76.0
SLM 192 A	610	90	430	M24	130	75	+/- 6	15	610	508	20	6	52.5	100.0

L = Screw length