



CEILING MOUNTS

Akustik + Sylomer®:

Models and dimensions

PRODUCT DESCRIPTION

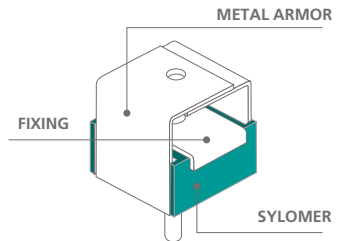
These antivibration mounts have been conceived for suspension from false ceilings, vibrating pipelines and machinery that has to be suspended.

The excellent properties of the Sylomer® microcelular polyurethane achieve eleva-

ted isolation values as opposed to other mounts using rubber or cork, or a combination of both. These antivibration mounts are manufactured in two special mixes of Sylomer® to adapt better to the load of each application.

A great variety of fixing metal

armors and elements facilitate installation and adapt better to each type of job. Their rugged metal parts withstand can tensile stresses from 650 kg to 1000 kg. They are supplied with an anticorrosive treatment that can withstand the toughest environments.



	<p>Akustik 1</p> <p>It is secured directly to the ceiling by means of two holes.</p>	
	<p>Akustik 3</p> <p>It is secured directly to the ceiling with a screw and locking nut.</p>	
	<p>Akustik 4</p> <p>It is secured with a screw via a nut welded to the metal armor.</p>	
	<p>Akustik Rapid</p> <p>Designed to be secured to most profiles on the market. Its design makes for easy and safe installations.</p>	
	<p>Akustik Safety</p> <p>Its gravitational system guarantees correct installation and offers greater safety, preventing elements from becoming detached. Thanks to its design, the mount will not attach to the profile if it is not installed properly. It prevents possible slip-ups. Its 45° forked design makes installation and removal easy and safe.</p>	

AKUSTIK + **sylomer**[®] by getzner

CEILING MOUNTS

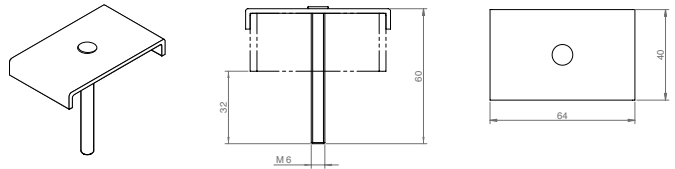
Akustik + Sylomer[®]: Models and dimensions



TYPE OF FIXING

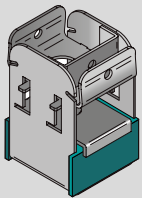
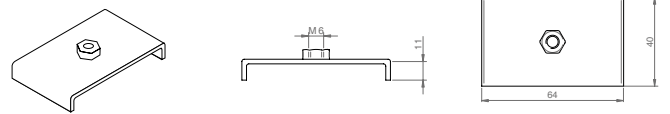
TYPE A

For installations where M6 male fixing is required, the recommended fixing is **Type A**.



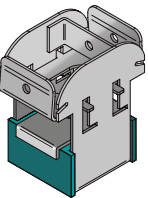
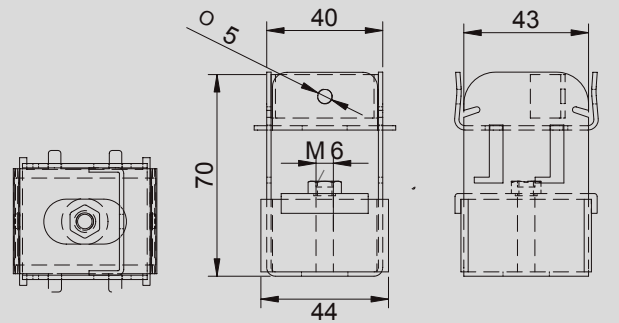
TYPE B

For installations where M6 female fixing is required, the recommended fixing is **Type B**.



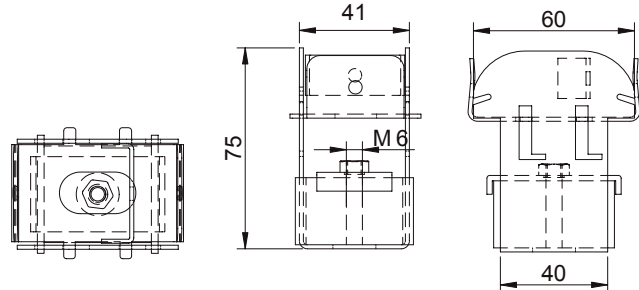
Akustik Super T47

The "SUPER" security feature is adaptable to the different profiles existing on the market.



Akustik Super T60

The external dimension of the profiles that exist on the market may vary, our "SUPER" security system with lip form adapts to the different lengths of the profile having a tight fit.



INSTALLATION STEPS OF AKUSTIK SUPER

Detail A

1• The security system is adaptable to different widths of profiles.

Detail B

2• The "SUPER" security system admits the possibility of inserting a blocking screw.

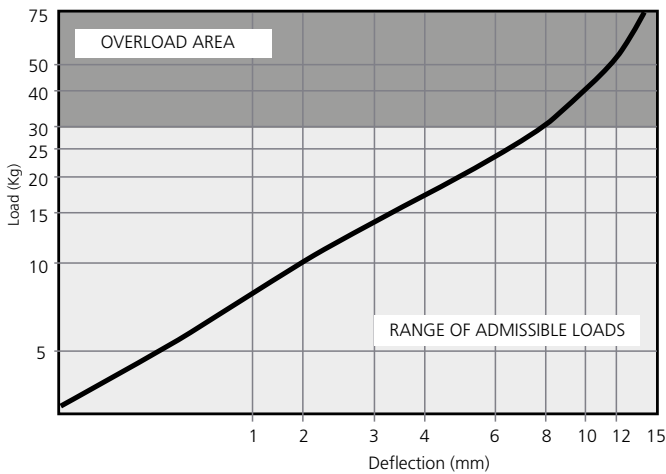
STEP 1	STEP 2	STEP 3

CEILING MOUNTS

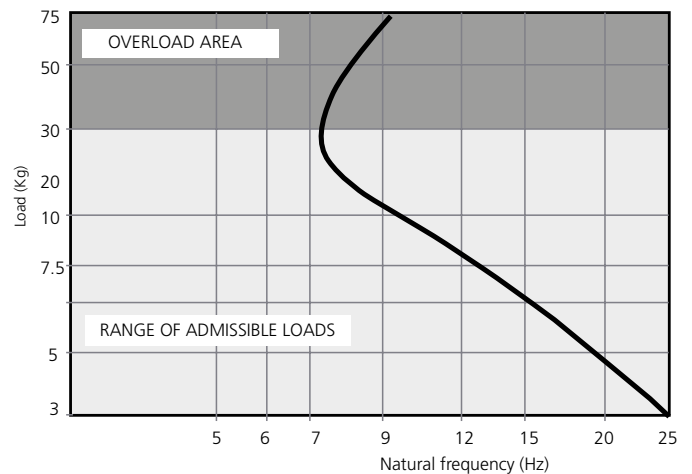
Akustik + Sylomer®: Models and dimensions

TYPES OF SYLOMER

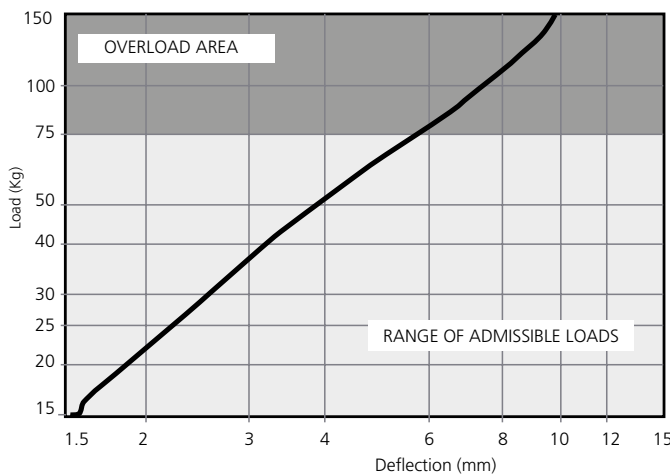
LOAD DEFLECTION GRAPH
Akustik + Sylomer **30**



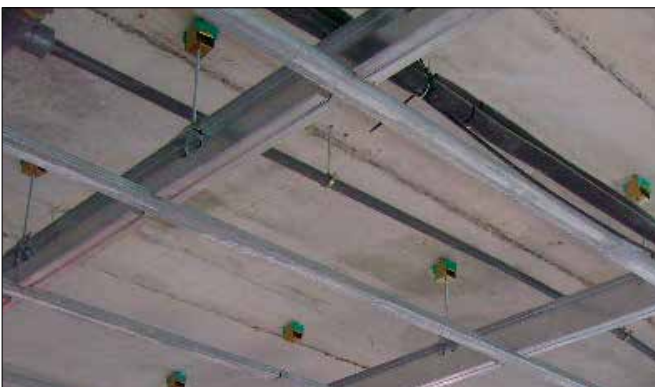
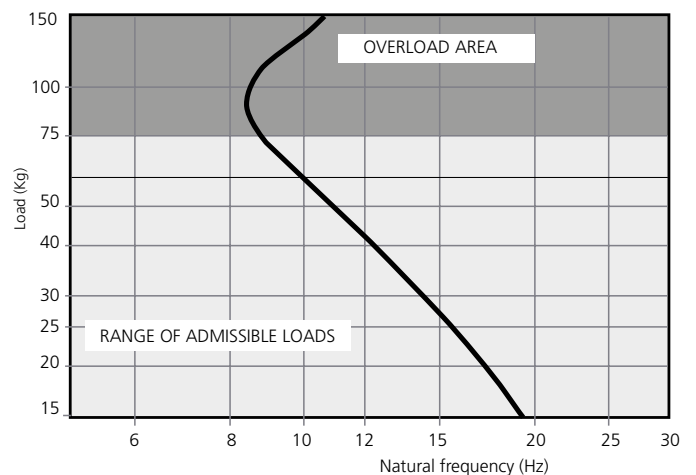
NATURAL FREQUENCY
Akustik + Sylomer **30**



LOAD DEFLECTION GRAPH
Akustik + Sylomer **75**



NATURAL FREQUENCY
Akustik + Sylomer **75**



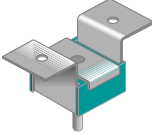
Application of an Akustik 4+Sylomer 30 type A.



Application of an Akustik Super T60 +Sylomer 30 type B.

CEILING MOUNTS

Akustik + Sylomer[®]: Range

REF AMC	SUMMARY	(Kg) MAX. LOAD	CODE
 Akustik 1 + Sylomer [®] 30 Type A	Ventana del Akustik 1 fijada al techo con dos agujeros y un Type de FIXING macho M- 6.	30	23501
 Akustik 3 + Sylomer [®] 30 Type A	Metal armor of the akustik 3 secured to the ceiling by an M6 screw and with a nut.	30	23503
 Akustik4 + Sylomer [®] 30 Type A	Metal armor of the Akustik 4 secured to the ceiling by an M6 screw.	30	23505
 Akustik Rapid + Sylomer [®] 30 Type A	Metal armor of the Akustik rapid secured to the ceiling by an M6 screw.	30	23507
 Akustik Safety + Sylomer [®] 30 Type A	Metal armor of the Akustik Safety secured to the ceiling by an M6 screw.	30	23508
 Akustik 1 + Sylomer [®] 30 Type B	Metal armor of the Akustik 3 secured to the ceiling by a welded M6 nut.	30	23509
 Akustik 3 + Sylomer [®] 30 Type B	Metal armor of the Akustik 4 secured to the ceiling by a welded M6 nut.	30	23511
 Akustik4 + Sylomer [®] 30 Type B	Metal armor of the Akustik Rapid secured to the ceiling by a welded M6 nut.	30	23513
 Akustik Rapid + Sylomer [®] 30 Type B	Metal armor of the Akustik Safety secured to the ceiling by an M6 screw.	30	23515
 Akustik STeguridad + Sylomer [®] 30 TypeB	Metal armor of the Akustik Safety secured to the ceiling by a welded M6 nut.	30	23516

CEILING MOUNTS

Akustik + Sylomer®: Range

REF. AMC	SUMMARY	(Kg) MAX. LOAD	CODE
 Akustik 1 + Sylomer®75 Type A	Metal armor of the Akustik 1 secured to the ceiling with two holes and an M6 male fixing type (Type A).	75	23517
 Akustik 3 + Sylomer®75 Type A	Metal armor of the akustik 3 secured to the ceiling by an M6 screw and with a nut.	75	23519
 Akustik4 + Sylomer®75 Type A	Metal armor of the Akustik 4 secured to the ceiling by an M6 screw.	75	23521
 Akustik Rapid + Sylomer®75 Type A	Metal armor of the Akustik rapid secured to the ceiling by an M6 screw.	75	23523
 Akustik Safety + Sylomer®75 Type A	Metal armor of the Akustik 1 secured to the ceiling by a welded M6 nut.	75	23524
 Akustik 1 + Sylomer®75 Type B	Metal armor of the Akustik 3 secured to the ceiling by a welded M6 nut.	75	23525
 Akustik 3 + Sylomer®75 Type B	Metal armor of the Akustik 4 secured to the ceiling by a welded M6 nut.	75	23527
 Akustik4 + Sylomer®75 Type B	Metal armor of the Akustik Rapid secured to the ceiling by a welded M6 nut.	75	23529
 Akustik Rapid + Sylomer®75 Type B	Metal armor of the Akustik Safety secured to the ceiling by an M6 screw.	75	23531
 Akustik Safety + Sylomer®75 Type B	Metal armor of the Akustik Safety secured to the ceiling by a welded M6 nut.	75	23533